

FOR LEASE



2/29 Fitzroy Street, Junee

This inviting two-bedroom unit beckons those seeking comfort and convenience. The property boasts a well-appointed kitchen complete with a sturdy stove and gas cooktop, the kitchen flows into the dining room where the loungeroom and enclosed sunroom meet. The spacious main bedroom features a ceiling fan. The bathroom is thoughtfully designed, featuring both a separate bath and shower to cater to your pampering needs, while an additional, separate toilet ensures privacy and functionality. The enclosed sunroom provides a tranquil retreat bathed in natural light, an ideal spot for morning coffee or unwinding with a good book.

...

2 1 1

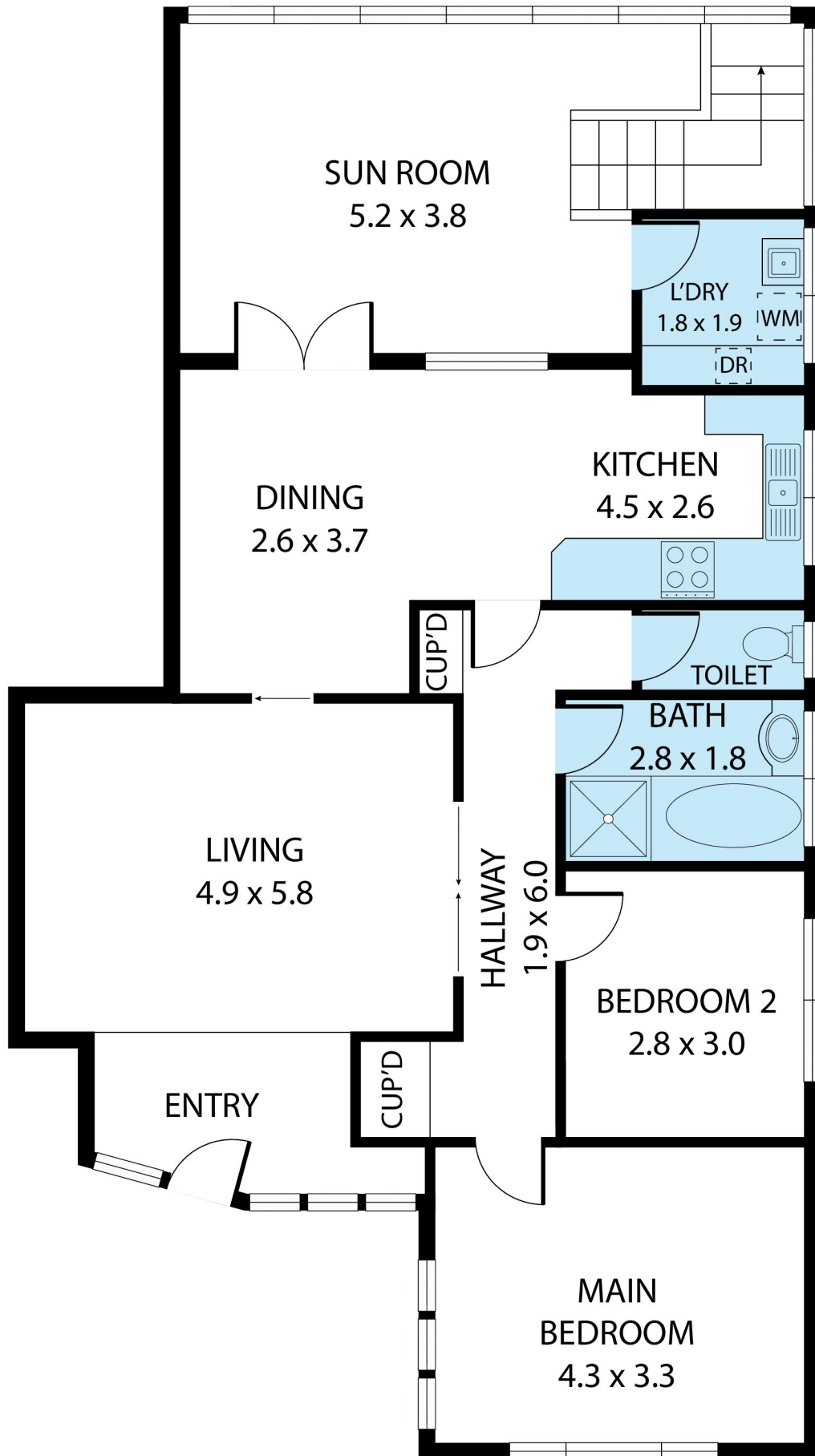
Price: \$340 Weekly

View: <https://remaxvision.com.au/8060439>

Aimee Hanson
M 0418583510



RE/MAX Property Specialits,
Narrabeen



Unit 2/29 Fitzroy Street, Junee 2663

TOTAL APPROX. FLOOR AREA 112 SQ.M

Whilst every attempt has been made to ensure the accuracy of the floor plan contained here, measurements of doors, windows, rooms and any other items are approximate and no responsibility is taken for any error, omission, or misstatement. This plan is for illustrative purposes only and should be used as such by any prospective purchaser.