

FOR SALE**15A Anzac Avenue, Junee**

Located at the corner of John Potts Drive, this residence presents a splendid opportunity for downsizers and retirees seeking a tranquil lifestyle with the ease of convenience. The abode has undergone an extensive refurbishment, boasting a new roof, a fresh coat of paint inside and out, and brand-new carpeting and blinds, offering a turnkey solution to comfortable living.

At the heart of this charming home lies a thoughtfully designed kitchen, featuring ample cabinetry, sleek laminate worktops, and a gleaming new Teknika stove, perfect for crafting culinary delights. The property comprises three generously sized bedrooms, with the added flexibility of a fourth room or study complete with external access-ideal for guests or a quiet reading nook....

The t...

3 2 1

Price: \$449,000

View: <https://remaxvision.com.au/8081548>

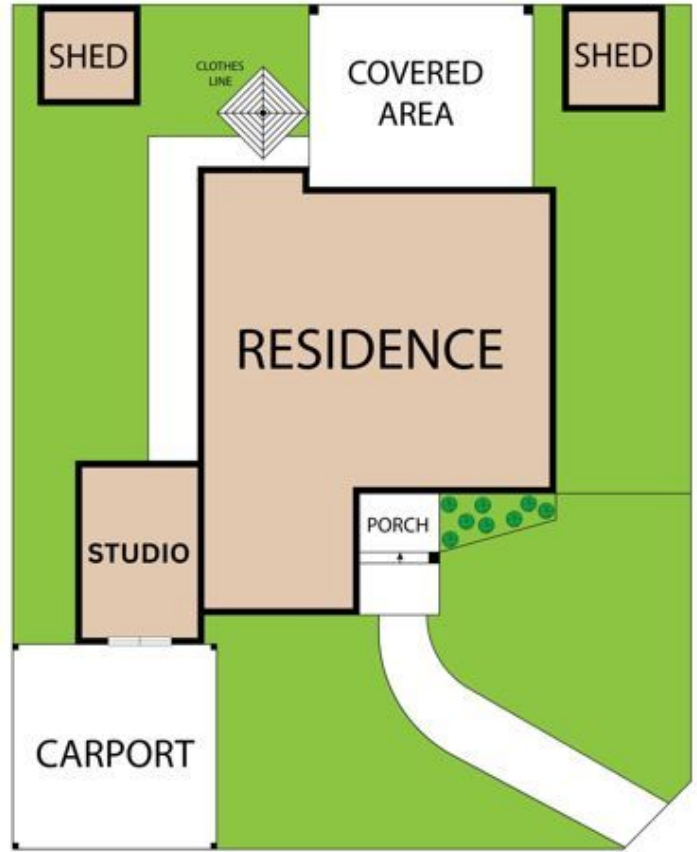
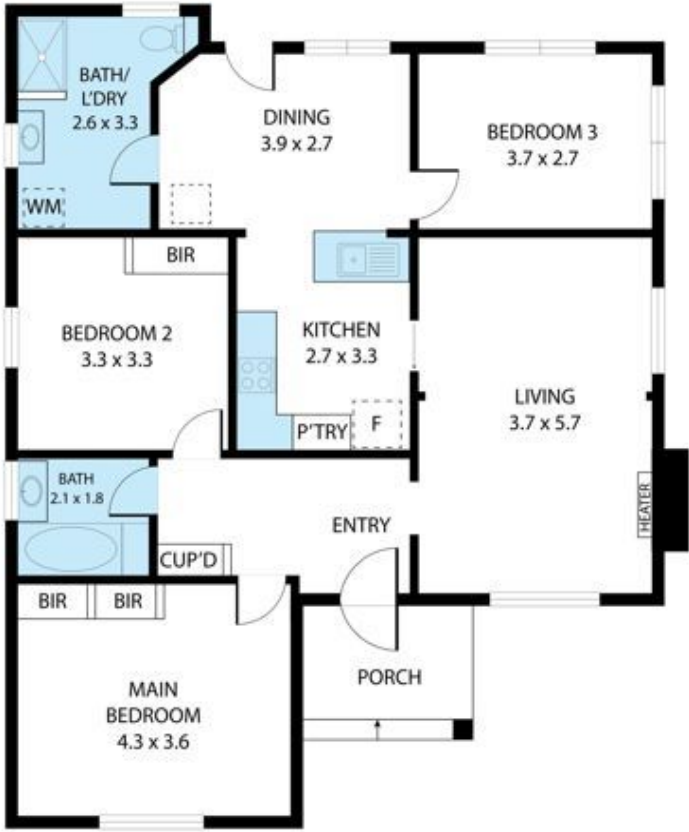
Jacqui Hedlund
M 0416 243 257



Jenna Pollard
0418 421 621



Narrabeen



15 Anzac Avenue, Junee 2663

TOTAL APPROX. FLOOR AREA 107 SQ.M

Whilst every attempt has been made to ensure the accuracy of the floor plan contained here, measurements of doors, windows, rooms and any other items are approximate and no responsibility is taken for any error, omission, or misstatement. This plan is for illustrative purposes only and should be used as such by any prospective purchaser.